

How to disable the Windows Media Player Network Sharing Service

What exactly is wmpnetwk.exe?

When Microsoft introduced Windows Media Player 10, they also introduced network media sharing. The process then lingered on and is included with Windows Media Center as well. This feature includes sharing videos and music to your Xbox 360, other computers, and some mobile devices. But, none of the network sharing will work without something to host it. This is where wmpnetwk.exe comes in, it literally is the service that “*shares Windows Media Player libraries to other networked players sand media devices using Universal Plug and Play.*” The only downside is that the process runs 24/7 regardless of if you are actually using it, and in doing so uses up a chunk of system resources. Next to that it can cause issues with some Windows updates.

WmiPrvSE.exe	780 K	WMI Provider Host
wmpnetwk.exe	8,688 K	Windows Media Player Network Sharing Se...
WUDFHost.exe	332 K	Windows Driver Foundation - User-mode D...

500072011.com

Since the process was designed specifically for Windows Media Player it makes sense that the file is located in the same folder at:

C:\Program Files\Windows Media Player\wmpnetwk.exe

How To Disable wmpnetwk.exe (Media Sharing for Windows Media Player)

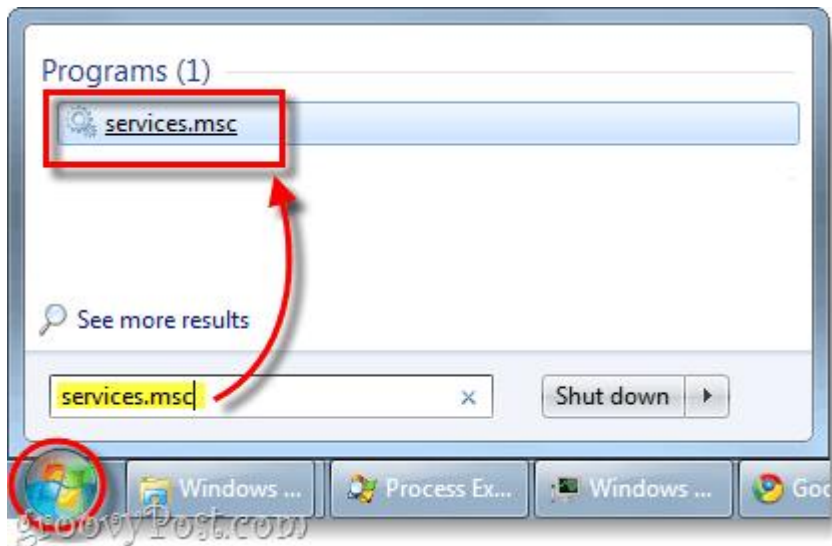
Note that if you use Windows Media Player for media sharing, this process is essential and must be kept running. On the other hand, if you don't use Windows Media Player for sharing your media, let's get rid of this sucker!

Step 1

The surest way to get rid of wmpnetwk.exe is to disable it from the system services list.

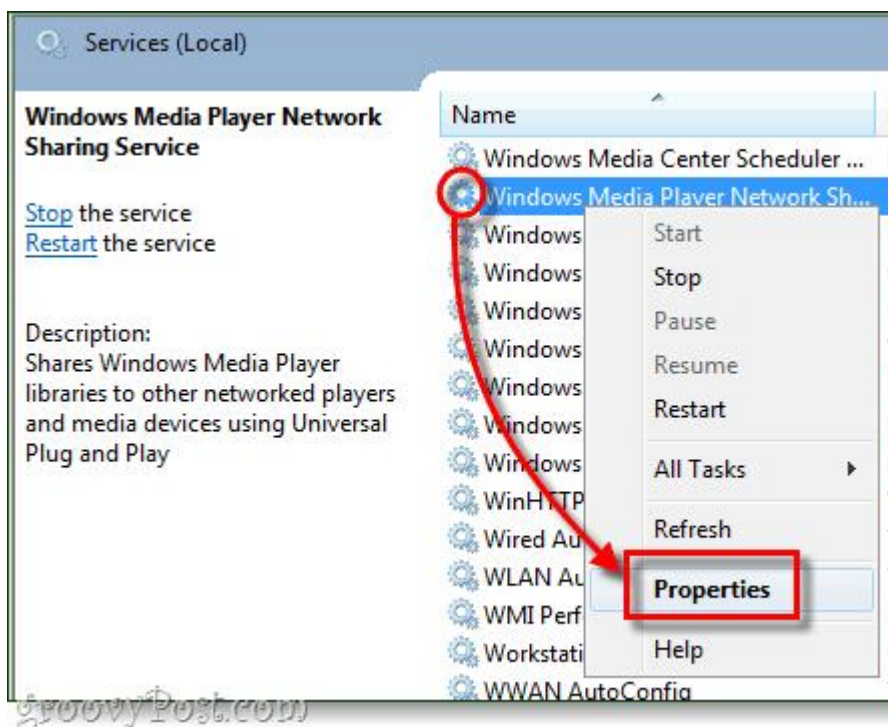
From the Windows Start Menu, open up **services.msc**.





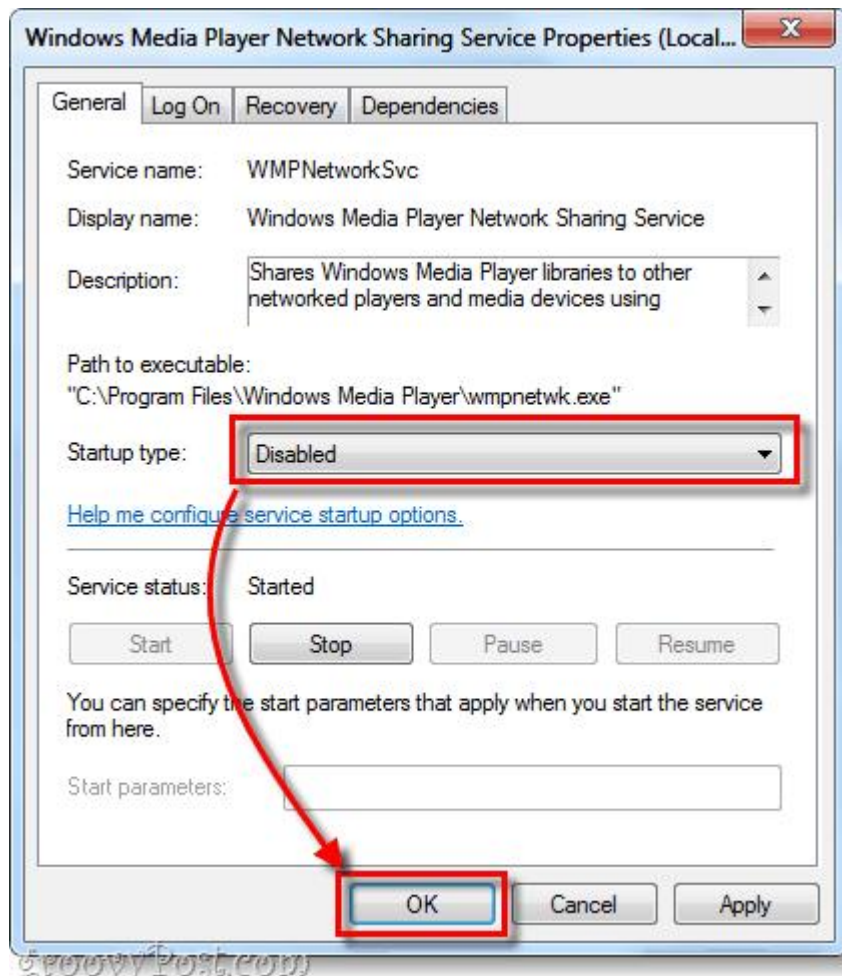
Step 2

Scroll down the local services menu and **Right-Click Windows Media Player Network Sharing Service**. Then from the context menu, **Select Properties**.



Step 3

From the General tab in the properties window *Set* the **Startup type** to **Disabled** and then *Click* **OK** to save changes.



You're done! wmpnetwk.exe should now be disabled.