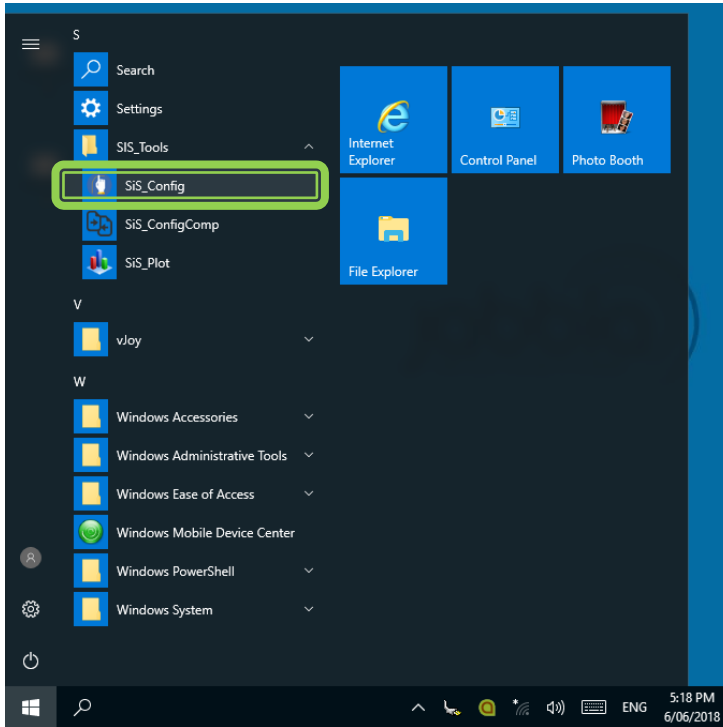
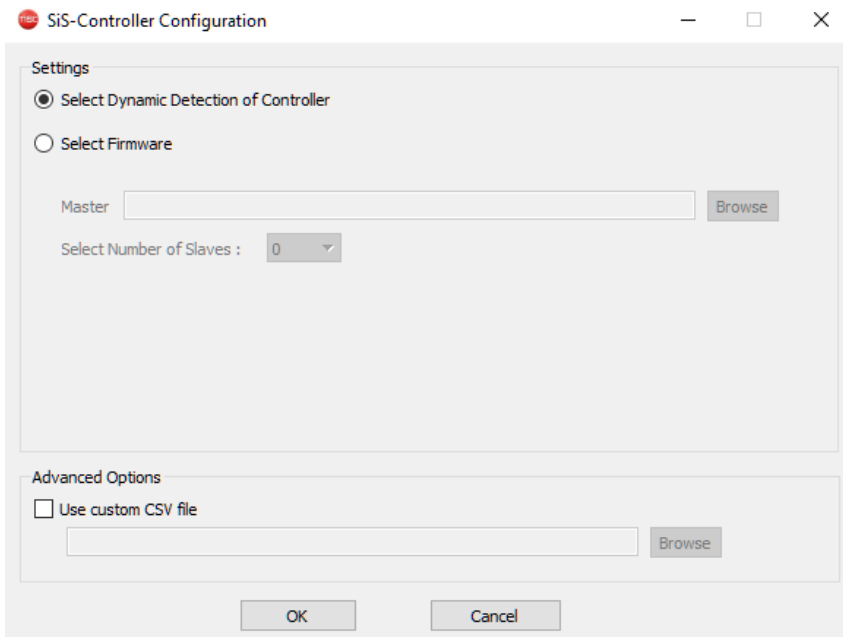


Mobi 3 Capacitive Touchscreen calibration

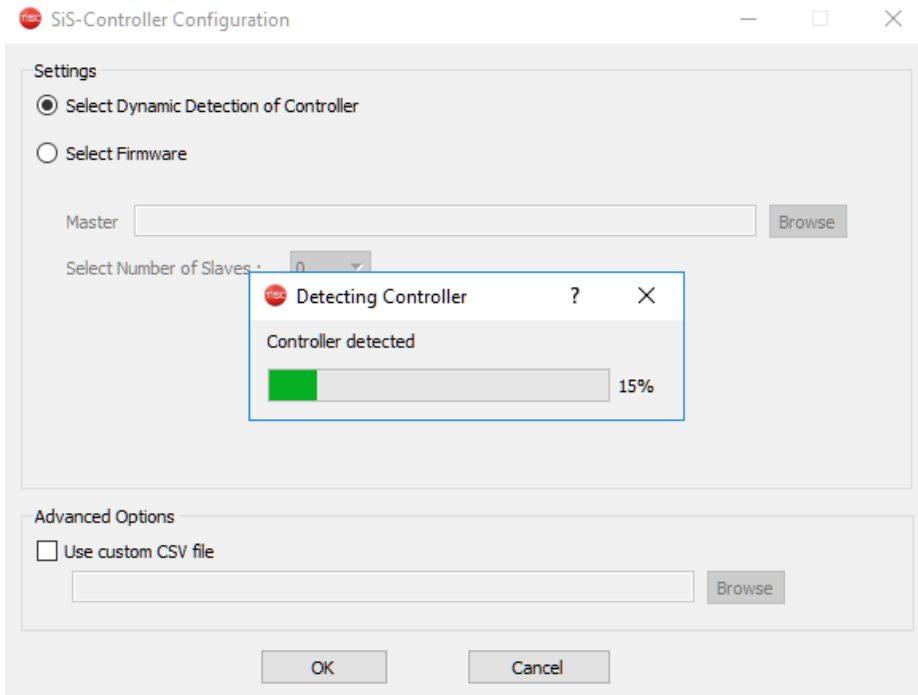
1. Browse to “C:\SIS_Tools\SIS_Config.exe” or run the file from the Start menu.



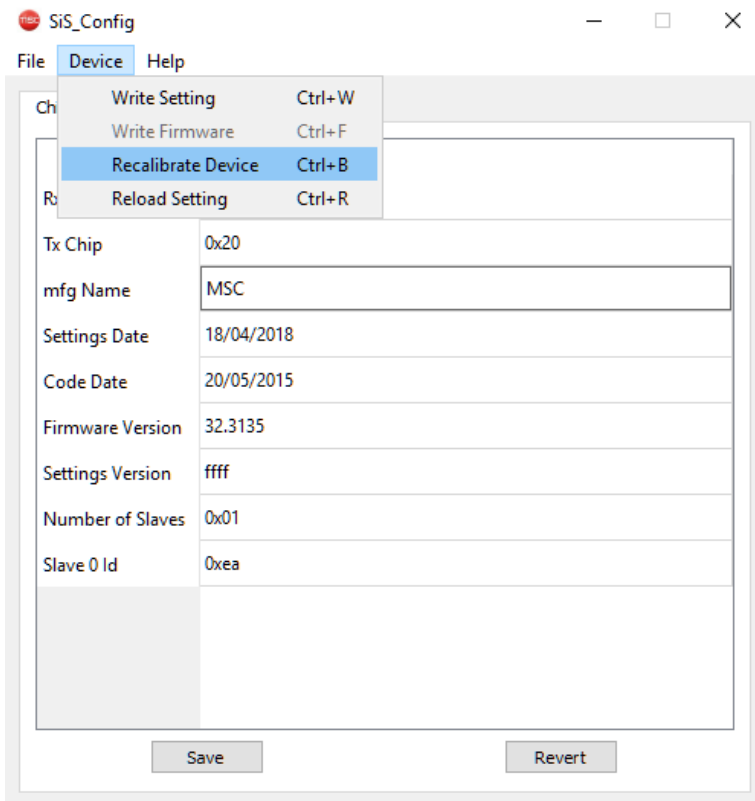
2. Choose “Select Dynamic Detection of Controller” and choose ‘OK’.



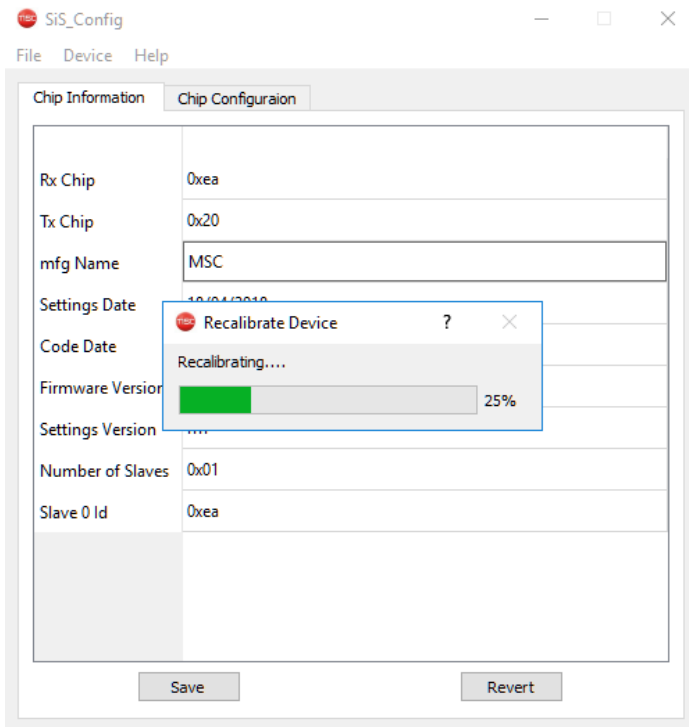
3. The touchscreen will now be detected automatically.



4. After detection, choose "Device" > "Recalibrate Device" in the menu.



5. The capacitive touchscreen is now being recalibrated.



6. When finished, a “Recalibrate Device Success” message will show. Click ‘OK’ and close the tool by clicking on the ‘X’ in the top right corner.

